



# MONTHLY MEMBERSHIP PROGRESS REPORT

District 2 S4

Results as of: 4/30/2017

GMT: HAL GRIFFIN

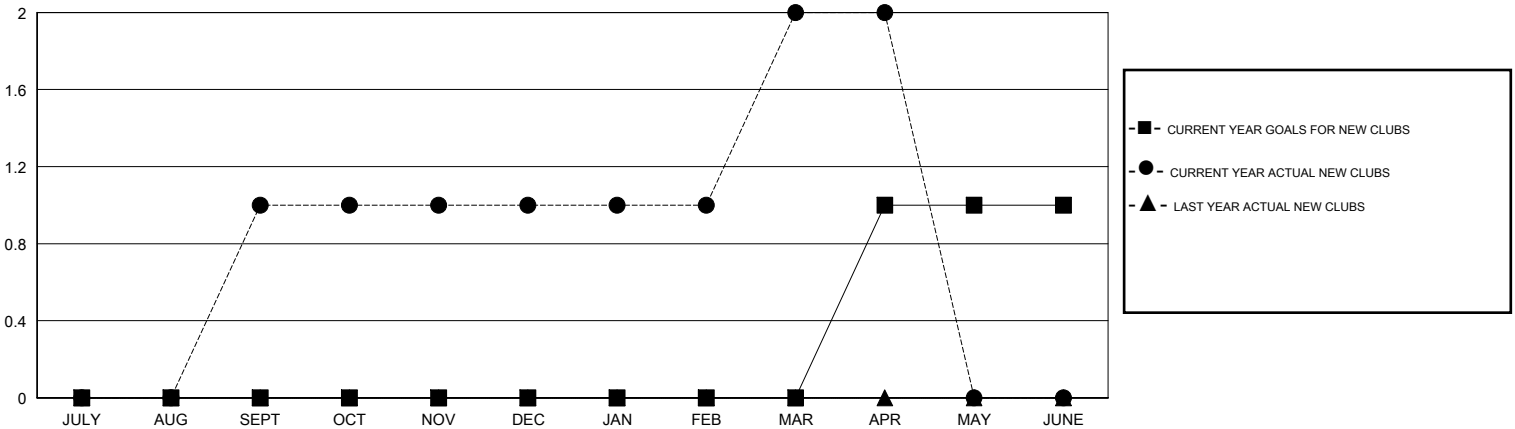
LOCATION TEXAS

GMT CA

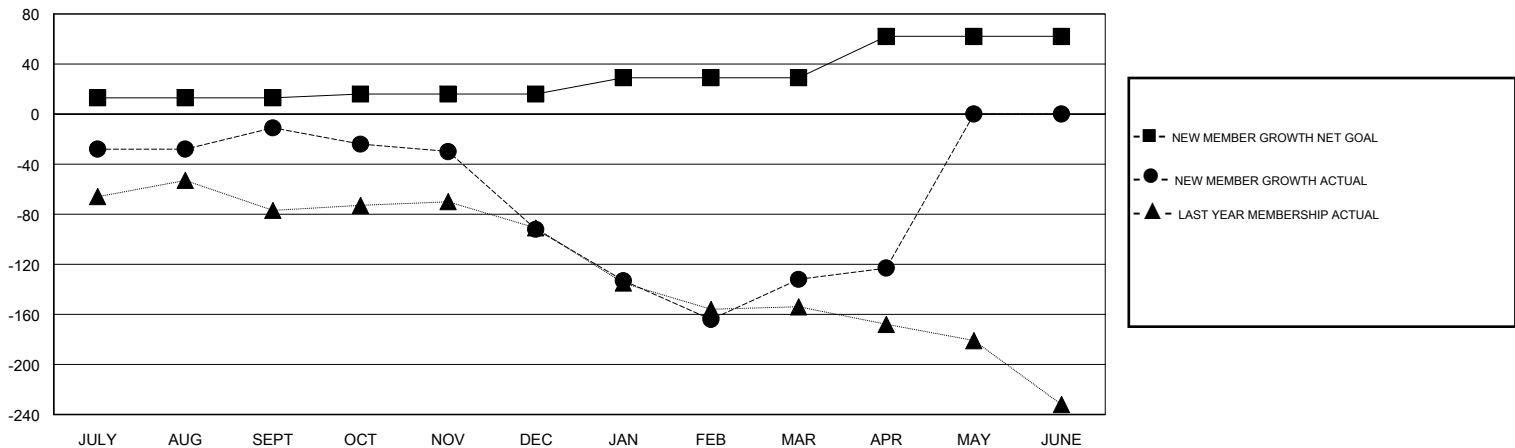
Clubs			
RESULTS FOR 2016-2017			
QUARTER	NEW CLUB GOAL	NEW CLUBS	DROPPED CLUBS
JULY/AUG/SEPT	0	1	1
OCT/NOV/DEC	0	0	2
JAN/FEB/MAR	0	1	0
APR/MAY/JUNE	1	0	0

Members			
RESULTS FOR 2016-2017			
QUARTER	NEW MEMBER GROWTH NET GOAL (not reinstated or transfers)	NEW MEMBER GROWTH ACTUAL (not reinstated or transfers)	DROPPED MEMBERS ACTUAL (including transfers)
JULY/AUG/SEPT	13	107	118
OCT/NOV/DEC	3	55	136
JAN/FEB/MAR	13	94	134
APR/MAY/JUNE	33	32	23

GOALS AND ACTUAL NEW CLUBS CUMULATIVE



GOALS AND ACTUAL MEMBERS CUMULATIVE



DROPPED CLUBS: 3	60 CLUBS OF 85 ADDED 1 OR MORE NEW MEMBERS	<b>GENDER DISTRIBUTION</b>
		MALE 1,388 (60.85%)
		FEMALE 893 (39.15%)
<b>DROPPED MEMBERS</b>	<a href="#">CLICK HERE FOR CUMULATIVE MEMBERSHIP DATA</a>	TOTAL FAMILY UNIT MEMBERS 345
DECEASED 19		FAMILY MEMBERS PAYING HALF DUES 176
CLUB CANCELLED 27		
OTHER 365		
<b>TOTAL 411</b>		